

EUROPE PATENT
N° 05 717 472.4-1218

With its square shape, the **Domino Quadro** can be used to create a variety of regular light effects.

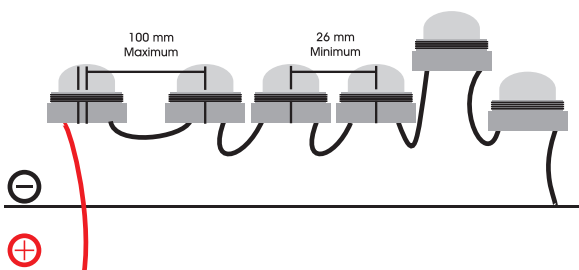
- It is possible to create all kinds of designs, especially large ones, and obtain an infinite variety of effects by modifying the spacing and arrangement of the LEDs, grouping them into patches of light and mixing colours.
- Signs have maximum visibility thanks to the 180° lighting.
- As with the Pogo, the large dimensions and power of the luminous flux produce a large shaft of light similar to that from a neon tube.
- The square shape is suited to a more «institutional» type of communication.



DESCRIPTION

Domino Quadro are pre-wired on a carrier in inseparable groups of six of the same colour. Each LED is encapsulated and embedded in resin to ensure maximum sealing (IP 66). The colour of the capsule identifies the colour of the LED.

To fix Domino Quadro, simply clip them into the holes in the support. The lips used to clip them can withstand possible expansion of the support. Signs made with Domino Quadro have a particularly low energy consumption.

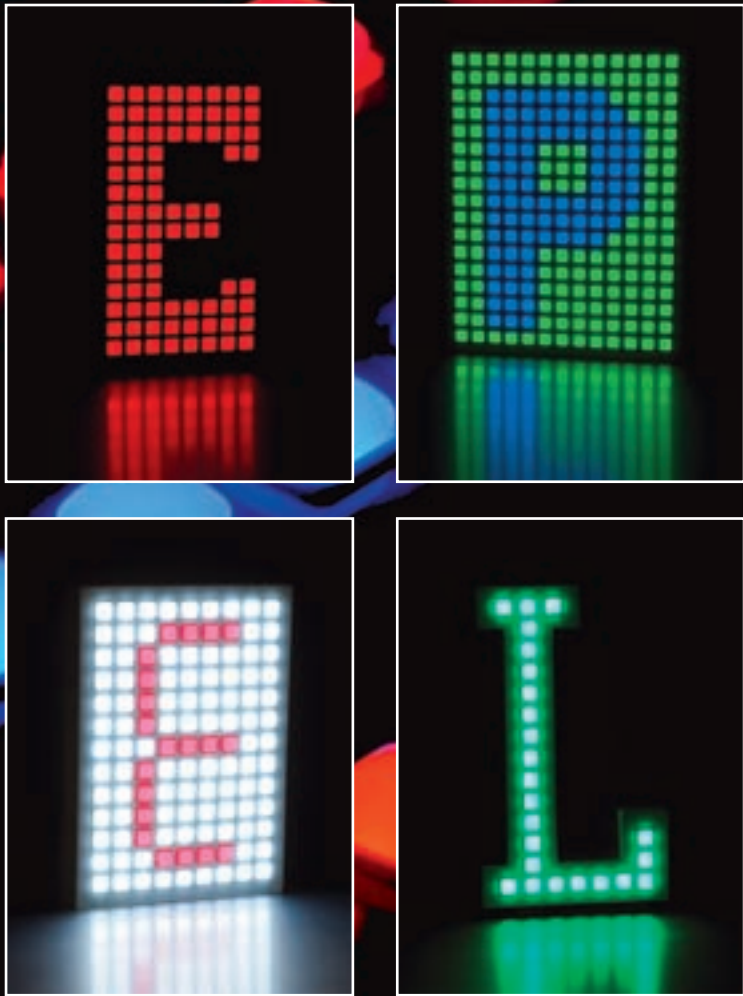
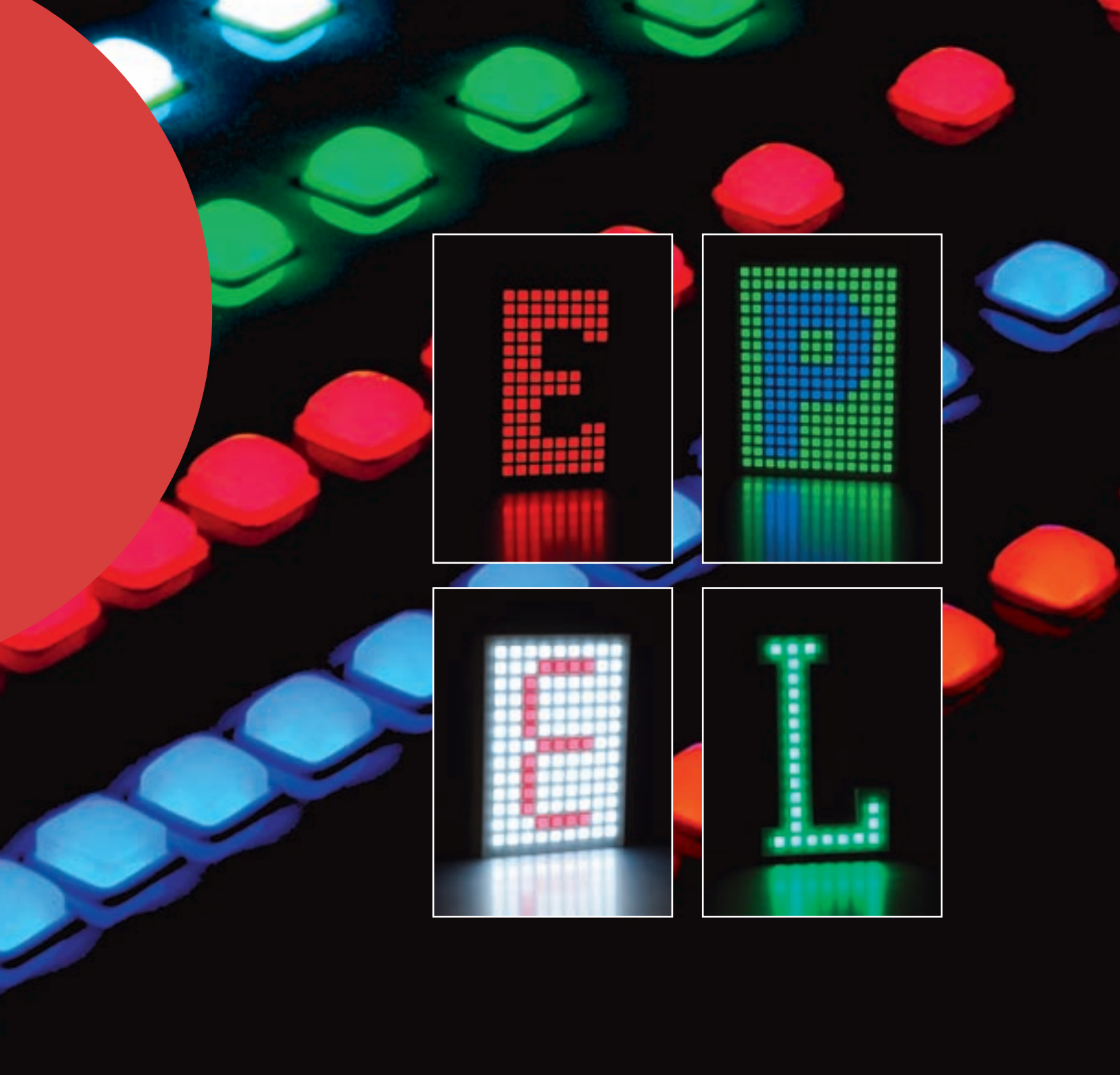


INSTALLATION

INFORMATION FOR DESIGNERS

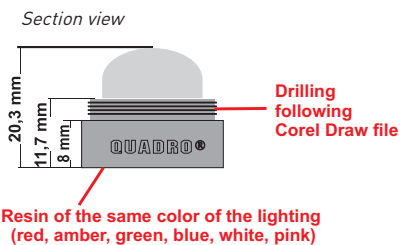
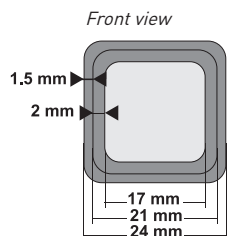
Domino Quadro dimensions are available in vectorised format. The file can be downloaded from www.dominosign.net

- Minimum and maximum spacing between LEDs:
 - minimum centre to centre distance: 26 mm
 - maximum centre to centre distance: 100 mm
- A drilling template can be downloaded free of charge from our website. Allowance must be made for the thickness of any layers of paint when piercing holes in the support. Tests will be required depending on the type of paint and applicator.
- Thickness of support (PMMA, aluminium or composite sheet) between 1 and 3 mm
- The power of the 24 V electricity supply is obtained by multiplying the consumption of one LED by the number of LEDs. N.B. the consumption of Domino Pogo LEDs varies depending on their colour (see power supply guide, p. 44).



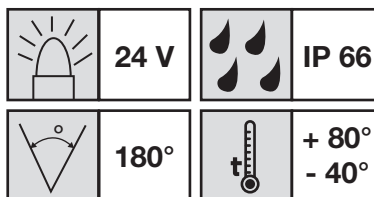
CHARACTERISTICS

Diagram of LED



Colours	Red	Amber	Green	Blue	White	Pink
Luminous flux (L/m)	3	3	8	2	8	2
Consumption Watt/LED	0,4	0,4	0,53	0,53	0,53	0,53

Animation: Yes Dimmer : yes



CE
RoHS

PACKAGING

Wrapped in antistatic plastic film
Quantity: 60

WORKSHOP GUIDE



UNPACKING - HANDLING

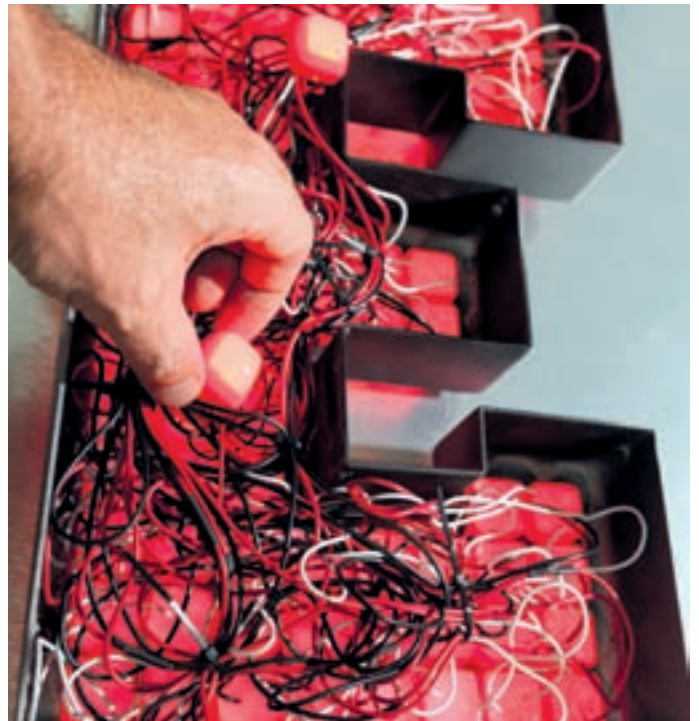
As the LEDs consist of electronic components, they should be handled with care. Domino Quadro are protected in their original packing by a treated antistatic plastic film so that you can unroll and use the quantity you require without any risk of entanglement. For electrostatic reasons, the work surface must at least be earthed. We recommend using ESD mats.



INSTALLATION

The support must be clean. Domino Quadro are introduced into the holes and clipped by pressing on the back of the capsule until the rim meets the support.

Whenever the number of holes in the support is not a multiple of four, any extra Domino Quadro are kept at the back of the support. The same procedure should be followed when introducing different colours in various places as **the 6 LEDs in a single module are inseparable.**



WIRING

After determining the number and/or power of the electricity supplies, no more than 60 LEDs should be wired on loops in parallel. To connect these loops in parallel to the 24V supply cables (+ and -), use electrically insulated connectors to avoid any short-circuits (cf. connector accessories) or make a connection with solder and heat-shrinkable tubing.

- ⚠ IMPORTANT REMINDER:** Cross-section of carrier cable connecting loops:
- 1,5 mm² when the power supply is less than 2 m from the sign
 - 2,5 mm² when the power supply is less than 2 m from the sign

ADVICE

As with any sign, once it has been assembled we advise you to perform an aging test lasting at least 48 h to check that it has been properly assembled and connected and that the LEDs have not suffered any damage in the process.

